

# BIOSAFETY PROTOCOL

At Pelecanus Travel Agency we have designed these recommendations based on “RESOLUTION 777 OF 2021 (June 2) Whereby the criteria and conditions for the development of economic, social and State activities are defined and the biosafety protocol for the execution of these activities is adopted”.

By following this protocol, you will have a safe and unforgettable trip in Colombia. At Pelecanus Travel Agency we care about you.

## WHAT IS COVID-19?

Coronavirus disease (COVID-19) is an infectious disease caused by a newly discovered coronavirus.

Most people infected with the COVID-19 virus will experience mild to moderate respiratory illness and recover without requiring special treatment. Older people, and those with underlying medical problems like cardiovascular disease, diabetes, chronic respiratory disease, and cancer are more likely to develop serious illness.

The best way to prevent and slow down transmission is to be well informed about the COVID-19 virus, the disease it causes and how it spreads. Protect yourself and others from infection by washing your hands or using an alcohol-based rub frequently and not touching your face.

The COVID-19 virus spreads primarily through droplets of saliva or discharge from the nose when an infected person coughs or sneezes, so it's important that you also practice respiratory etiquette (for example, by coughing into a flexed elbow).

## BIOSAFETY MEASUREMENTS

To reduce the impact of COVID-19 outbreak on tourist activities, it is important that we all incorporate the following prevention measures:

1. Have a daily record of your health and please let us know if you feel any of the following symptoms:
  - a. Most common symptoms:
    - i. fever
    - ii. dry cough
    - iii. tiredness
  - b. Less common symptoms:
    - i. aches and pains
    - ii. sore throat



# BIOSAFETY PROTOCOL

CÓDIGO: PRO-SST-008

VERSIÓN: 1

FECHA: 1/10/2021

- iii. diarrhea
  - iv. conjunctivitis
  - v. headache
  - vi. loss of taste or smell
  - vii. a rash on skin, or discoloration of fingers or toes
- c. Serious symptoms:
- i. difficulty breathing or shortness of breath
  - ii. chest pain or pressure
  - iii. loss of speech or movement
2. Remember to wash or disinfect your hands at least every 2 hours.
  3. It is highly recommended to always carry your personal biosafety kit, that includes glycerinated alcohol, antibacterial gel, face masks and antibacterial wet towels once the tour begins.
  4. Wash your hands with soap and water when they are visibly dirty, before and after using the toilet, before and after eating, after sneezing or coughing, before and after wearing a mask and before touching your face.
  5. The use of a face mask is always mandatory. It is required in airports, transportation, social areas at hotels, restaurants, bathrooms, supermarkets, stores and shopping centers among other public places, and at poor ventilated spaces such as elevators, or offices.
  6. Your equipment is for personal use, and you must avoid lending or exchanging them. In the case of the ground telescope, the guide in charge will frequently sanitize it as it is for shared use.
  7. Practice social distancing rules. The physical distance between people in the place or environment should be at least 1 meter. Family groups, according to the definition contained in numeral 3.8 of Article 3 of Decree 1374 of 2020, this physical distance rule does not apply to them, but they must observe it with other groups or persons.
  8. The guides and service providers will ask you to comply with biosafety protocols and hygiene practices (social distancing, use of face mask and constant disinfection of equipment and elements that are manipulated) during tour activities.
  9. Cover your mouth and nose with a tissue when you cough or sneeze. Throw used tissues in the trash. If you don't have a tissue, cough, or sneeze into your elbow, not your hands. Remember to immediately wash your hands after blowing your nose, coughing, or sneezing.
  10. Feel free to recommend other hygiene and disinfection measures and suggest it to the provider at any time.
  11. Remember that every place and/or services have their own protocols, which we must follow. Pelecanus Travel Agency leader will be reporting on any change in the conditions.

**Pelecanus SAS**

NIT: 901012952-7

Calle 12D bis No. 1a – 34 Oficina 401

La Candelaria – Bogotá D.C

info@pelecanus.com.co

[www.pelecanus.com.co](http://www.pelecanus.com.co)



# BIOSAFETY PROTOCOL

CÓDIGO: PRO-SST-008

VERSIÓN: 1

FECHA: 1/10/2021

## CORRECT USE OF FACEMASK

For both clinical and fabric masks, avoid leaving them unprotected in bags or pockets, or on any surface such as tables, shelves, among others, as they can become contaminated or damaged.

Facemask should not be used by children under 2 years old, people with respiratory problems, people unable to remove it without assistance.

### PLEASE BEAR IN MIND:

- Make sure your hands are clean before wearing the face mask.
- You must take it off from the side elastics.
- Completely cover your mouth and nose.
- Avoid touching the mask while wearing it.
- Wash your hands after throwing it away.
- The mask should be removed and discarded if it is torn, dirty or wet.
- Keep the mask in its original packaging or sealed bag before use.
- The face mask is reusable after washing and disinfection.
- Remember that masks are effective only if combined with a frequent and rigorous hand washing for at least 20 seconds.

#### **Pelecanus SAS**

NIT: 901012952-7

Calle 12D bis No. 1a – 34 Oficina 401

La Candelaria – Bogotá D.C

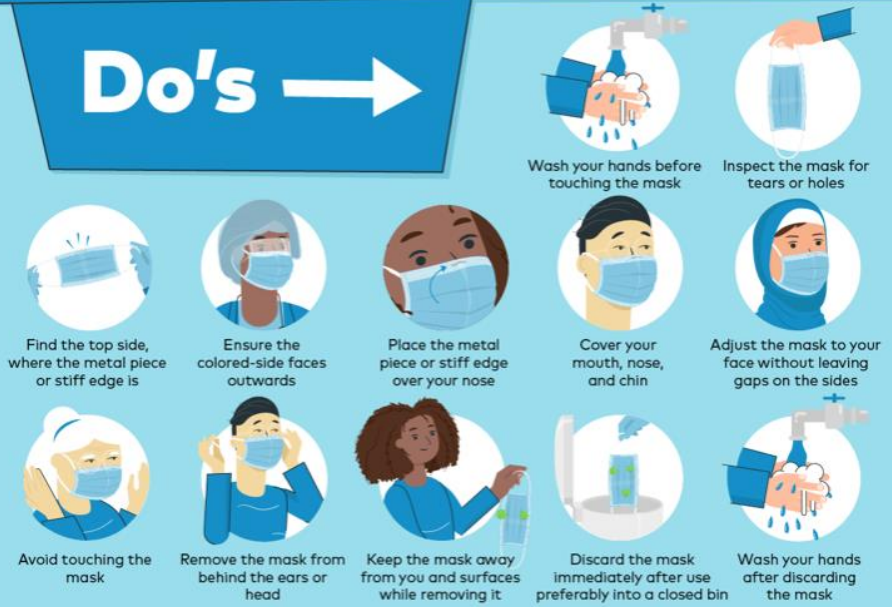
info@pelecanus.com.co

[www.pelecanus.com.co](http://www.pelecanus.com.co)

## HOW TO WEAR A MEDICAL MASK SAFELY

[who.int/epi-win](http://who.int/epi-win)

### Do's →



### Don'ts →



**Remember that masks alone cannot protect you from COVID-19. Maintain at least 1 metre distance from others and wash your hands frequently and thoroughly, even while wearing a mask.**

### CLOTH FACEMASK

- Wash it before each use.
- Remember that it is for personal use.
- Always use it in the same orientation, do not swap sides.
- Immediately wash your hands with soap and water rigorously for at least 20 seconds.
- When removing it, grab only the elastic bands that hold it and push it forward.

**Pelecanus SAS**

NIT: 901012952-7


Calle 12D bis No. 1a – 34 Oficina 401

La Candelaria – Bogotá D.C

[info@pelecanus.com.co](mailto:info@pelecanus.com.co)
[www.pelecanus.com.co](http://www.pelecanus.com.co)

# How to Handwash?

WASH HANDS WHEN VISIBLY SOILED! OTHERWISE, USE HANDRUB

 **Duration of the entire procedure: 40-60 seconds**



Wet hands with water;



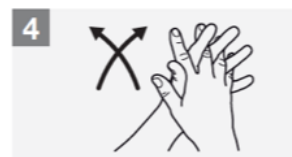
Apply enough soap to cover all hand surfaces;



Rub hands palm to palm;



Right palm over left dorsum with interlaced fingers and vice versa;



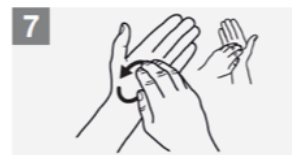
Palm to palm with fingers interlaced;



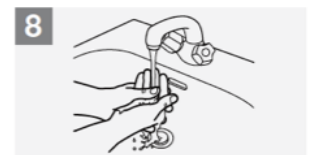
Backs of fingers to opposing palms with fingers interlocked;



Rotational rubbing of left thumb clasped in right palm and vice versa;



Rotational rubbing, backwards and forwards with clasped fingers of right hand in left palm and vice versa;



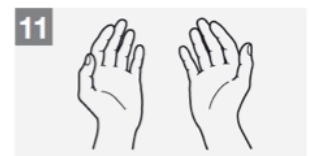
Rinse hands with water;



Dry hands thoroughly with a single use towel;




Use towel to turn off faucet;



Your hands are now safe.

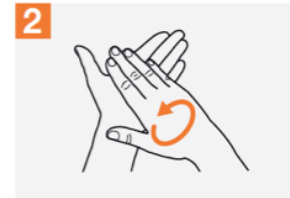
# How to Handrub?

RUB HANDS FOR HAND HYGIENE! WASH HANDS WHEN VISIBLY SOILED

 Duration of the entire procedure: 20-30 seconds



Apply a palmful of the product in a cupped hand, covering all surfaces;



Rub hands palm to palm;



Right palm over left dorsum with interlaced fingers and vice versa;



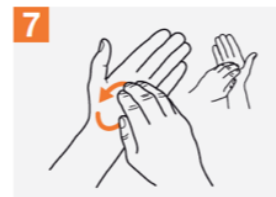
Palm to palm with fingers interlaced;



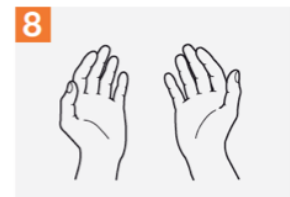
Backs of fingers to opposing palms with fingers interlocked;



Rotational rubbing of left thumb clasped in right palm and vice versa;



Rotational rubbing, backwards and forwards with clasped fingers of right hand in left palm and vice versa;



Once dry, your hands are safe.



World Health  
Organization

Patient Safety

A World Alliance for Safer Health Care

SAVE LIVES

Clean Your Hands

All reasonable precautions have been taken by the World Health Organization to verify the information contained in this document. However, the published material is being distributed without warranty of any kind, either expressed or implied. The responsibility for the interpretation and use of the material lies with the reader. In no event shall the World Health Organization be liable for damages arising from its use. WHO acknowledges the Hôpital Universitaire de Genève (HUG), in particular the members of the Infection Control Programme, for their active participation in developing this material.

May 2009

## IF SOMEONE HAS SYMPTOMS

What happens if a participant, the guide, or the driver presents symptoms or is suspect for COVID-19 during the tour?

1. Report the situation immediately to the Pelecanus Travel Agency agent.
2. The suspected person must carry out preventive isolation in the lodging in which he/she is located, as well as the rest of the group that was in close contact.
3. Immediately report the situation to your health and insurance providers.

**Pelecanus SAS**

NIT: 901012952-7

Calle 12D bis No. 1a – 34 Oficina 401

La Candelaria – Bogotá D.C

info@pelecanus.com.co

[www.pelecanus.com.co](http://www.pelecanus.com.co)



# BIOSAFETY PROTOCOL

CÓDIGO: PRO-SST-008

VERSIÓN: 1

FECHA: 1/10/2021

4. If the doctor determines that the test for COVID-19 should be made, the nearest medical assistance center will be located to perform it. While the result is determined, the client and the group should remain isolated.
5. The customer's emergency contact provided in the trip database will be notified.

## COVID TESTING SITES IN COLOMBIA

<https://co.usembassy.gov/wp-content/uploads/sites/103/COVID-Testing-Locations-in-Colombia.pdf>

<https://www.minsalud.gov.co/sites/rid/Lists/BibliotecaDigital/RIDE/VS/laboratorios-pruebas-covid-19.pdf>

## IN CASE SOMEONE IS POSITIVE FOR COVID 19

- a. All providers with whom the client has had contact will be informed to establish an epidemiological fence with the health secretariat of the zone.
- b. There will be total isolation in the lodging place and movement restrictions for the whole group.
- c. The rest of the clients in the group will be monitored on their health status and the mandatory quarantine will be applied.
- d. Rapid COVID-19 diagnostic tests will be suggested for each client and all personnel involved in the operation of the tour.
- e. Logistical support and advice will be given to meet the needs that the patient requires.
- f. Customer support will be provided in rescheduling services and their health progress will be monitored.

## PRIOR TO THE TOUR

Pelecanus Travel Agency has designed this protocol which would be carried out as follows:

1. Prior to the client's arrival in Colombia, the present biosafety protocol and their handling will be sent to the client.
2. Remember to comply with the protocols implemented by aeronautical authorities and airlines on the ground, during the flight, and upon arrival.
3. All travelers coming from abroad must provide a national telephone number to the Migración Colombia officer upon arrival to the country where they can be easily contacted and will commit to answer the calls from the local health authority and the National Tracking Contact Center (CCNR) with real information.
4. Fill out the Check-Mig of Migración Colombia online 24 hours before your flight to facilitate your immigration control. Access the Check-Mig here:  
<https://apps.migracioncolombia.gov.co/pre-registro/public/preregistro.jsf>
5. The immigration control authority reserves the right to decide on the entry and admission of travelers to national territory.
6. You can check this information in the following link:  
<https://www.cancilleria.gov.co/newsroom/news/nuevas-disposiciones-llegada-colombia-viajeros-exterior>

### **Pelecanus SAS**

NIT: 901012952-7

Calle 12D bis No. 1a – 34 Oficina 401

La Candelaria – Bogotá D.C

[info@pelecanus.com.co](mailto:info@pelecanus.com.co)

[www.pelecanus.com.co](http://www.pelecanus.com.co)



# BIOSAFETY PROTOCOL

CÓDIGO: PRO-SST-008

VERSIÓN: 1

FECHA: 1/10/2021

7. For domestic flights, you must consider the following regulations:
  - a. The use of a mask is mandatory from the entrance to the airport, during the flight, and at the port of arrival, regardless of the duration of the entire journey.
  - b. For medium and long duration flights (more than 2 hours) it is recommended to have multiple masks to replace them during the journey. For short flights, a single mask is enough.
  - c. The passengers must remain in their assigned seat throughout the flight. The full version resolution can be consulted at [www.minsalud.gov.co](http://www.minsalud.gov.co)

## FIELD PROTOCOLS

1. When arriving at the place where activities take place, the established biosafety protocols will be followed.
2. At snack time in the field, or eating food, each participant must be responsible for complying with biosecurity protocols.
3. Upon returning to the hotel or arriving at the place of lodging, the establishment's protocols will be followed and the guidelines to be followed during the rest of the day will be given.

## IF YOU ARE VACCINATED\*

1. You can resume activities that you did prior to the pandemic.
2. To reduce the risk of being infected with the Delta variant and possibly spreading it to others, all biosafety measurements must be taken, such as social distancing, wear a mask and wash your hands.
3. You might choose to wear a mask regardless of the level of transmission if you have a weakened immune system or if, because of your age or an underlying medical condition, you are at increased risk for severe disease, or if a member of your household has a weakened immune system, is at increased risk for severe disease, or is unvaccinated.
4. You need to pay close attention to the situation at your international destination before traveling outside your country.
5. If you've had close contact with someone who has COVID-19, you should get tested 3-5 days after your exposure, even if you don't have symptoms. You should also wear a mask indoors in public for 14 days following exposure or until your test result is negative. You should isolate for 10 days if your test result is positive.

## WHAT YOU SHOULD KEEP DOING

If you've been fully vaccinated:

1. You will still need to follow guidance at your workplace and local businesses.
2. If you travel, you should still take steps to protect yourself and others.
3. Wearing a mask over your nose and mouth is required on planes, buses, trains, and other forms of public transportation traveling into, within, or out your country, and while indoors at Colombia's transportation hubs such as airports and stations.

**Pelecanus SAS**

NIT: 901012952-7

Calle 12D bis No. 1a – 34 Oficina 401

La Candelaria – Bogotá D.C

[info@pelecanus.com.co](mailto:info@pelecanus.com.co)

[www.pelecanus.com.co](http://www.pelecanus.com.co)



 <b>Pelecanus</b> ®	<b>BIOSAFETY PROTOCOL</b>	CÓDIGO: PRO-SST-008
		VERSIÓN: 1
		FECHA: 1/10/2021

4. You should still watch out for symptoms of COVID-19, especially if you've been around someone who is sick.
5. If you have symptoms of COVID-19, you should get tested and stay away from others. If your test is positive, isolate in quarantine.
6. People who have a condition or are taking medications that weaken the immune system, should continue to take all precautions recommended for unvaccinated people until advised otherwise by their healthcare provider.

## ABOUT THE DELTA VARIANT

Vaccines are highly effective against severe illness, but the Delta variant causes more infections and spreads faster than earlier forms of the virus that causes COVID-19.

## WHAT WE KNOW

1. COVID-19 vaccines are safe and effective at preventing COVID-19, including severe illness and death.
2. COVID-19 vaccines are effective against severe disease and death from variants of the virus that causes COVID-19 currently circulating in the world, including the Delta variant.
3. Infections happen in only a small proportion of people who are fully vaccinated, even with the Delta variant. When these infections occur among vaccinated people, they tend to be mild.
4. If you are fully vaccinated and become infected with the Delta variant, you can spread the virus to others.
5. People with weakened immune systems, including people who take immunosuppressive medications, may not be protected even if fully vaccinated.

\*This guidance applies to COVID-19 vaccines currently authorized for emergency use by the U.S. Food and Drug Administration: Pfizer-BioNTech, Moderna, and Johnson & Johnson (J&J)/Janssen COVID-19 vaccines. This guidance can also be applied to COVID-19 vaccines that have been listed for emergency use by the World Health Organization (e.g. AstraZeneca/Oxford).

### REFERENCES

<https://www.who.int/>